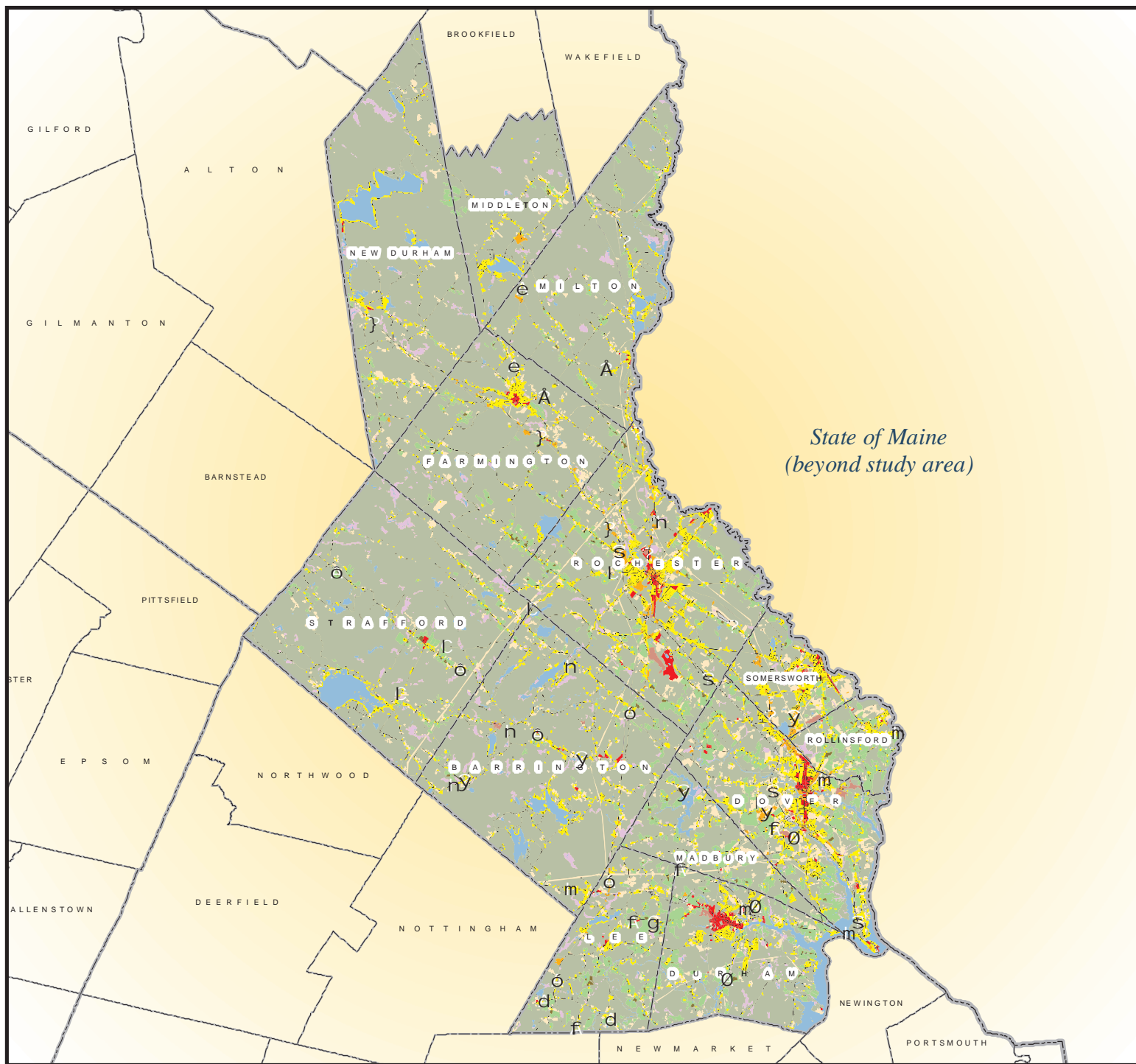


Integrating Technologies to Monitor and Predict Patterns of Urban Growth

1974 Land Use: Strafford County, New Hampshire



- | | | | |
|--|---------------------------|--|--------------------|
| | Residential | | Active agriculture |
| | Industrial/commercial | | Farmsteads |
| | Mixed urban | | Forested |
| | Transportation/roads | | Water |
| | Railroads | | Open wetlands |
| | Auxilliary transportation | | Idle/other open |
| | Playing fields/recreation | | |



Map Description:

In 2001, the Cooperative Institute for Coastal and Estuarine Environmental Technology (CICEET) at the University of New Hampshire funded GRANIT and Applied Geosolutions, LLC to develop spatial estimates of historic and current land use, and to utilize these estimates as primary inputs to a regional model predicting future patterns of urban sprawl. The model results will be used to assess the environmental impacts of the growing urban population on watershed quality and habitat degradation.

This map displays 1974 land use data for Strafford County, NH. The data were developed by interpreting 1:20,000 black and white digital orthophotographs. For more information on this or other GRANIT products, please visit : <http://www.granit.sr.unh.edu>



Map by:

Complex Systems Research Center
 Institute for the Study of Earth,
 Oceans and Space
 University of New Hampshire, Durham

January, 2005

