

# Integrating Technologies to Monitor and Predict 1962 Land Use Rockingham County, NH

Patterns of Urban Growth

## Urban Classes

- Residential
- Industrial/commercial
- Mixed urban
- Transportation/roads
- Railroads
- Auxilliary transportation
- Playing fields/recreation

## Agricultural Classes

- Active agriculture
- Farmsteads

## Natural Communities

- Forested
- Water
- Open wetlands

## Other

- Idle/other open

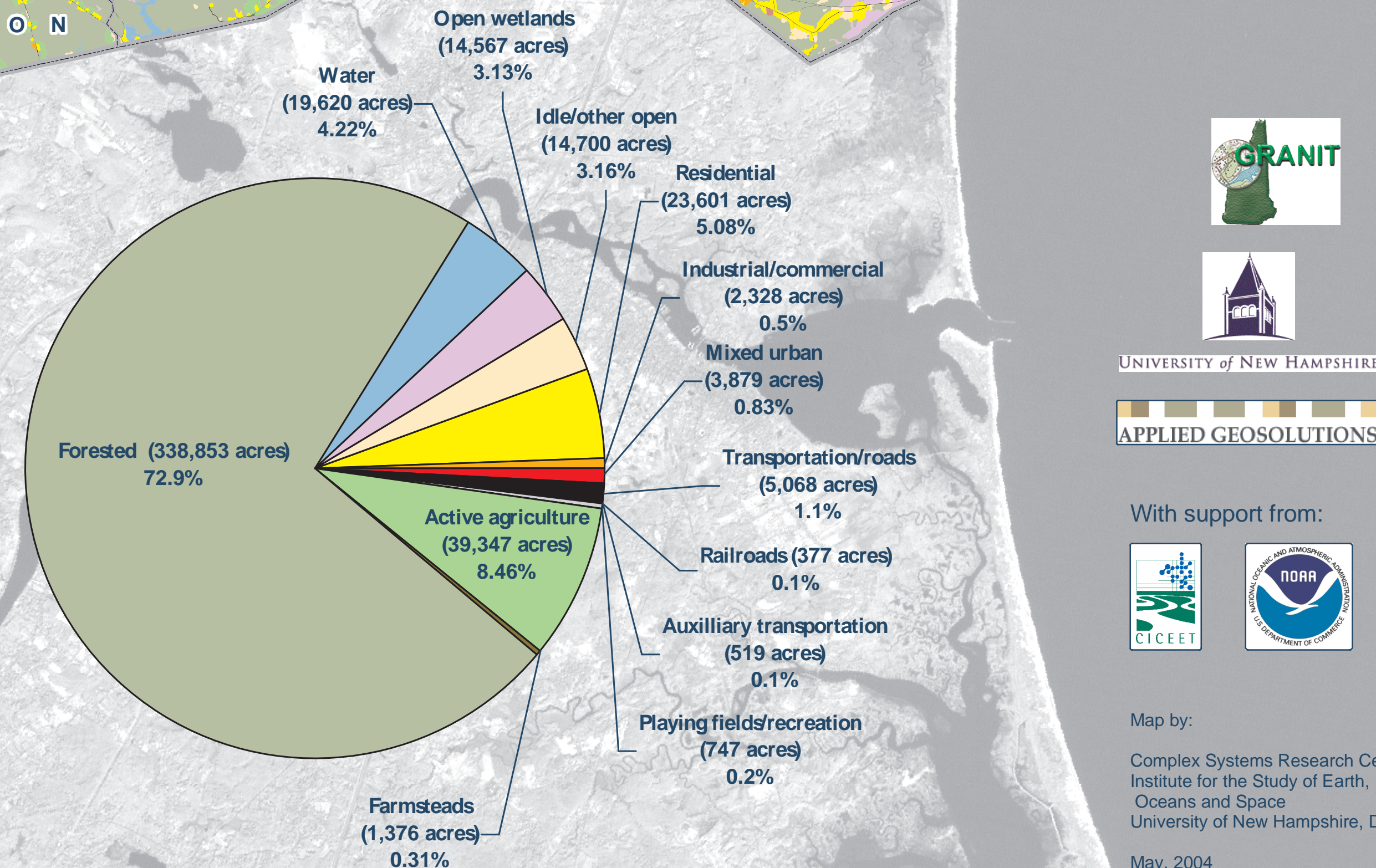
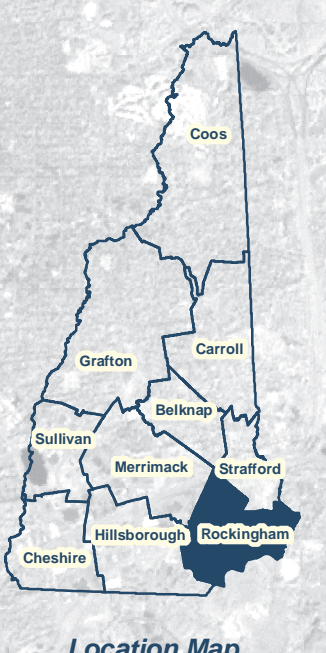
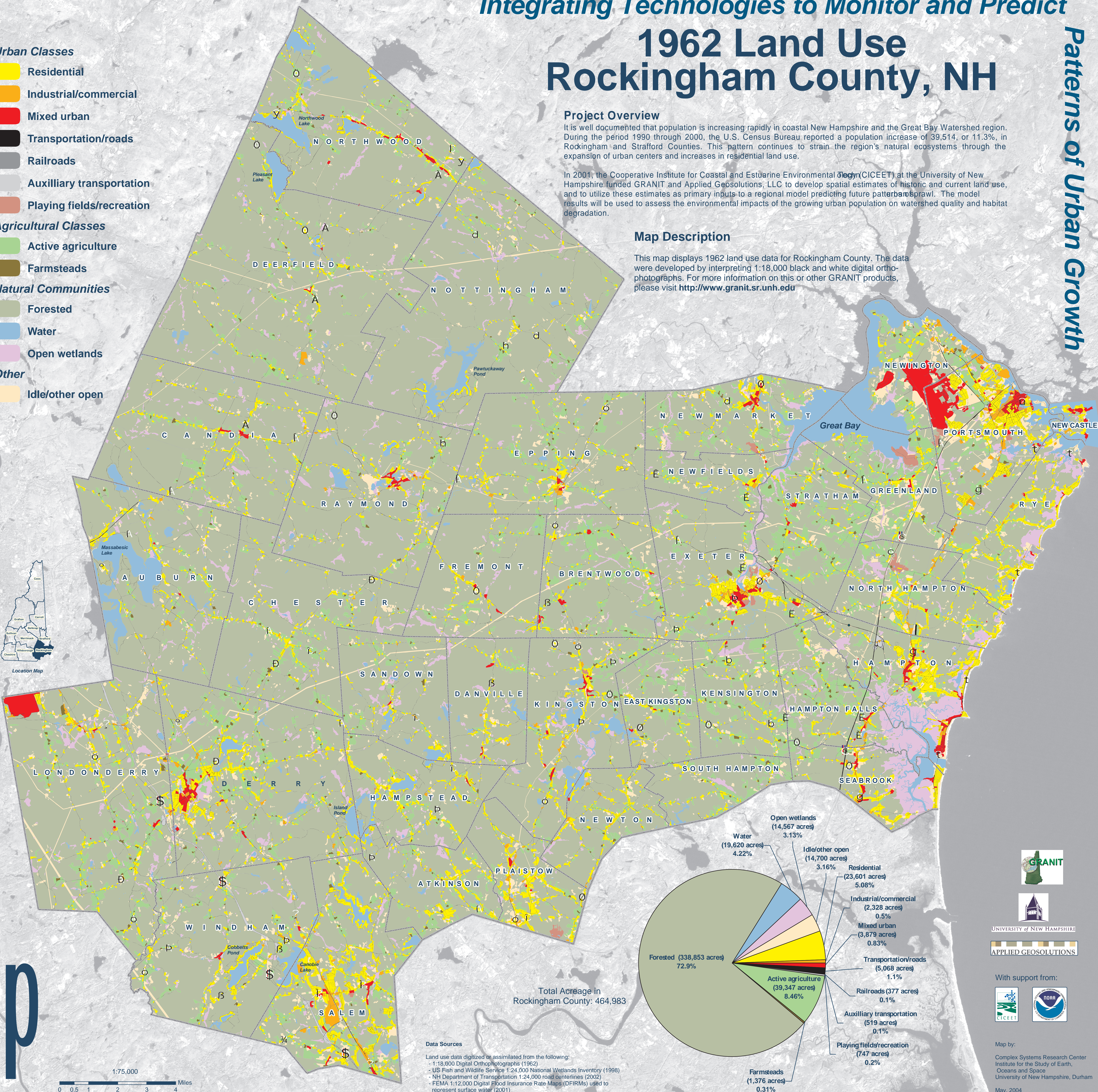
### Project Overview

It is well documented that population is increasing rapidly in coastal New Hampshire and the Great Bay Watershed region. During the period 1990 through 2000, the U.S. Census Bureau reported a population increase of 39,514, or 11.3%, in Rockingham and Strafford Counties. This pattern continues to strain the region's natural ecosystems through the expansion of urban centers and increases in residential land use.

In 2001, the Cooperative Institute for Coastal and Estuarine Environmental Technology (CICEET) at the University of New Hampshire funded GRANIT and Applied Geosolutions, LLC to develop spatial estimates of historic and current land use, and to utilize these estimates as primary inputs to a regional model predicting future patterns of sprawl. The model results will be used to assess the environmental impacts of the growing urban population on watershed quality and habitat degradation.

### Map Description

This map displays 1962 land use data for Rockingham County. The data were developed by interpreting 1:18,000 black and white digital ortho-photographs. For more information on this or other GRANIT products, please visit <http://www.granit.sr.unh.edu>



**Total Acreage in Rockingham County: 464,983**

**Data Sources**  
 Land use data digitized or assimilated from the following:  
 - 1:18,000 Digital Ortho-photographs (1962)  
 - US Fish and Wildlife Service 1:24,000 National Wetlands Inventory (1998)  
 - NH Department of Transportation 1:24,000 road centerlines (2002)  
 - FEMA 1:12,000 Digital Flood Insurance Rate Maps (DFIRMs) used to represent surface water (2001)

With support from:

Map by:  
 Complex Systems Research Center  
 Institute for the Study of Earth,  
 Oceans and Space  
 University of New Hampshire, Durham  
 May, 2004

