

# New York-New Jersey-Connecticut-Pennsylvania Highlands Region

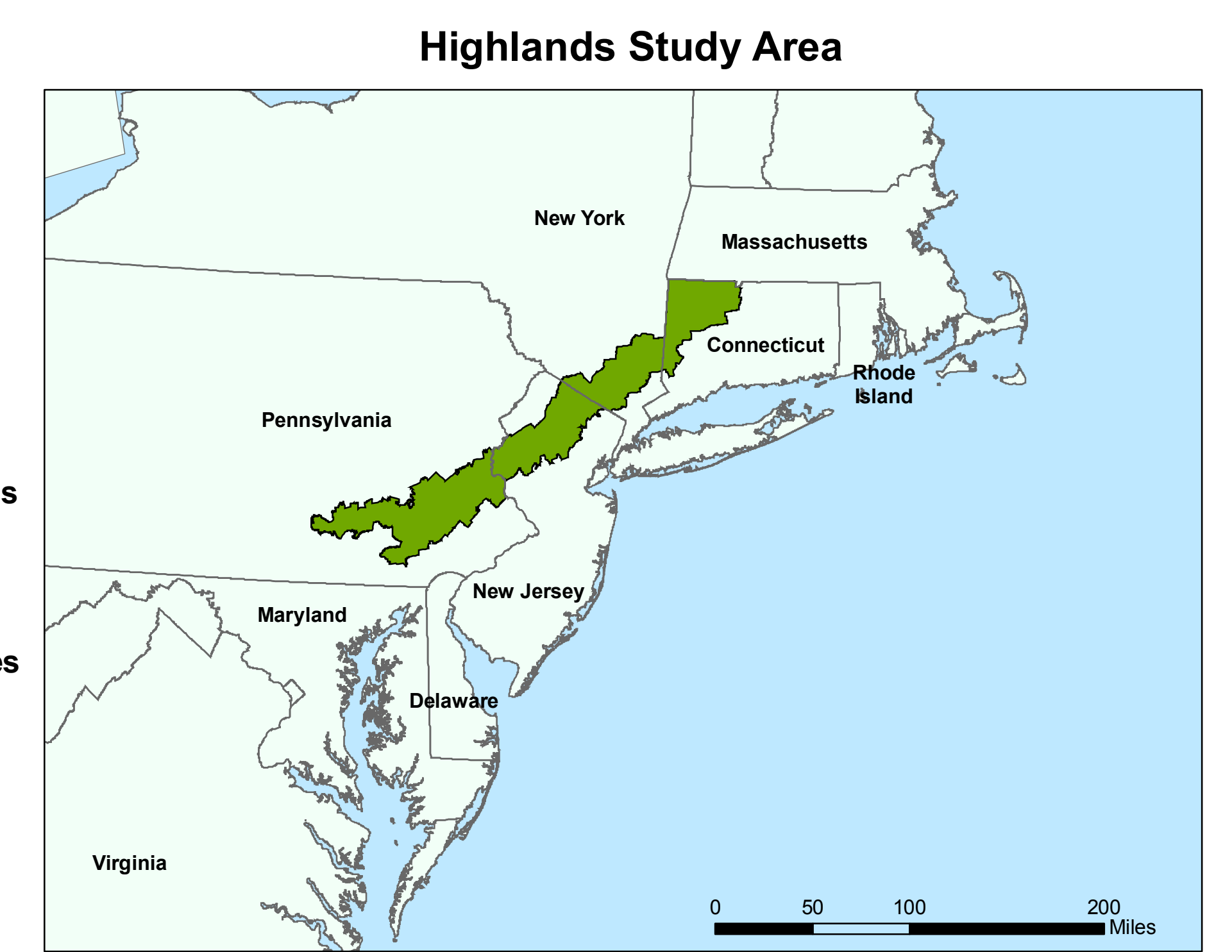
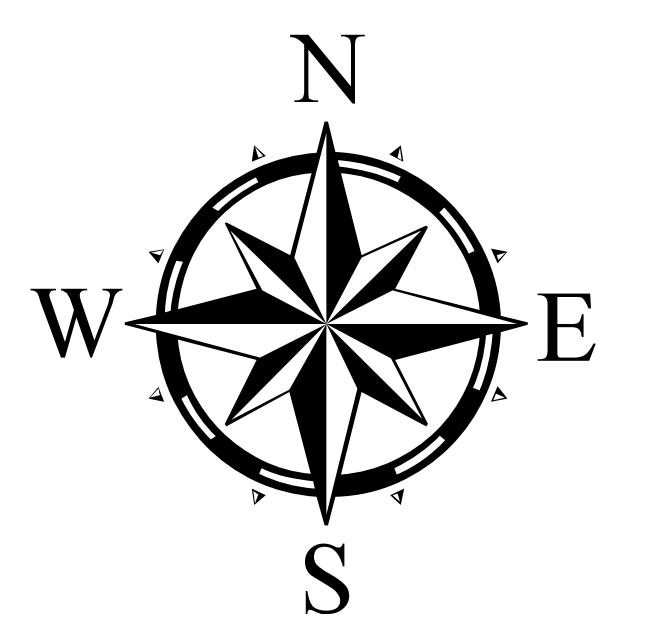
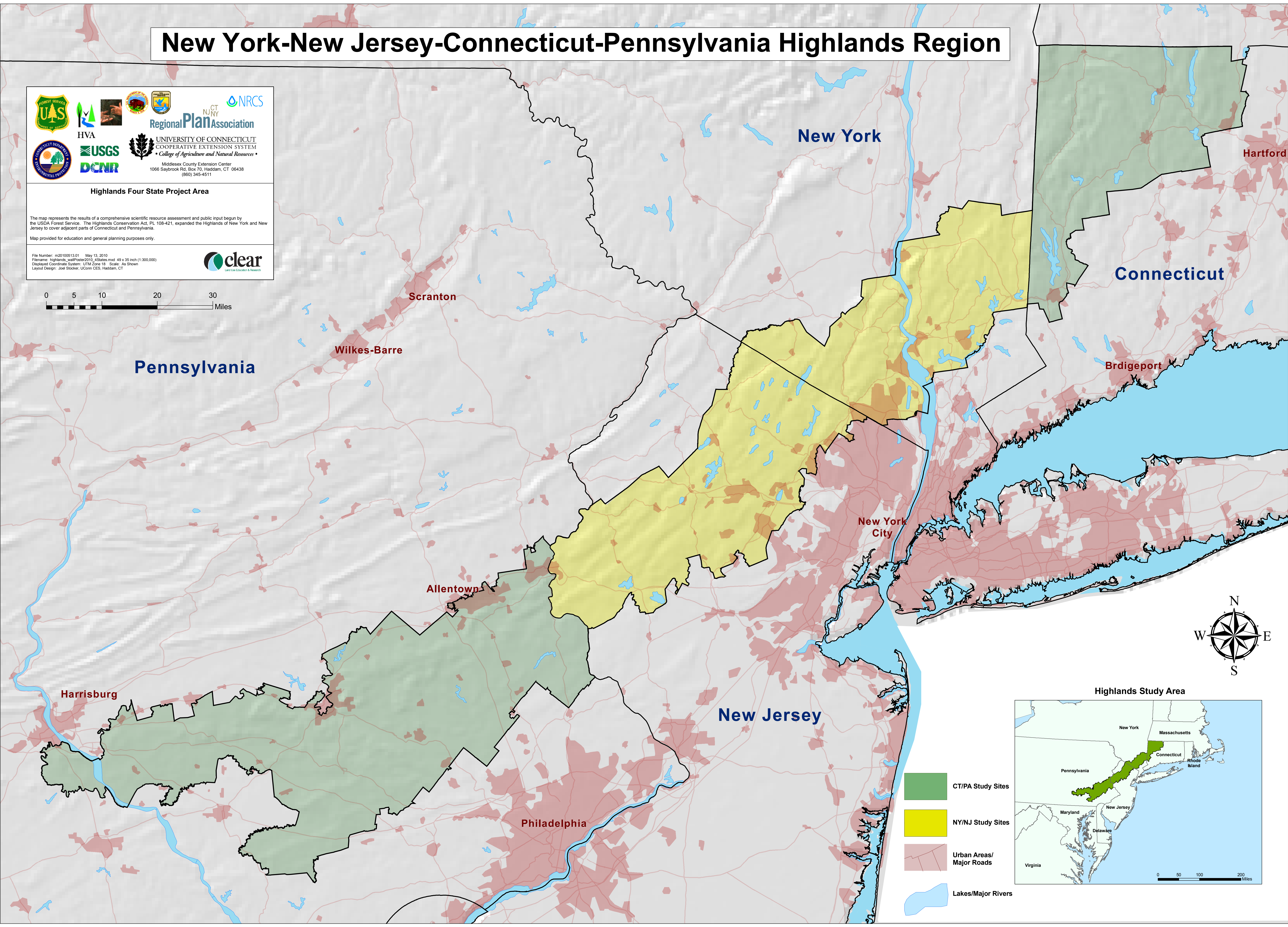
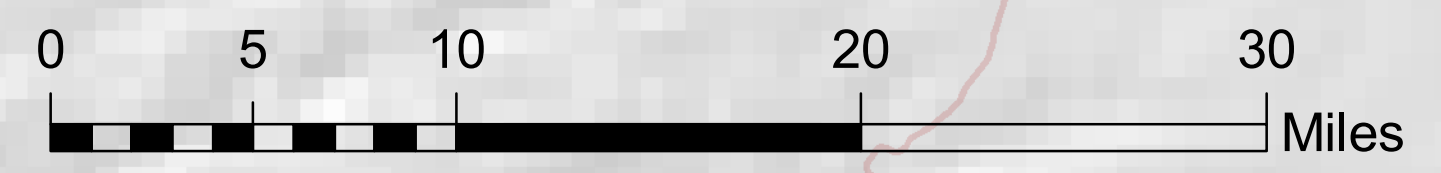


## Highlands Four State Project Area

The map represents the results of a comprehensive scientific resource assessment and public input begun by the USDA Forest Service. The Highlands Conservation Act, PL 108-421, expanded the Highlands of New York and New Jersey to cover adjacent parts of Connecticut and Pennsylvania.

Map provided for education and general planning purposes only.

File Number: m20100513.01 May 13, 2010  
 Filename: highlands\_wslPoster2010\_4States.mxd 49 x 35 inch (1,300,000)  
 Displayed Coordinate System: UTM Zone 18 Scale: As Shown  
 Layout Design: Joel Stocker, UConn CSS, Haddam, CT



- CT/PA Study Sites
- NY/NJ Study Sites
- Urban Areas/  
Major Roads
- Lakes/Major Rivers