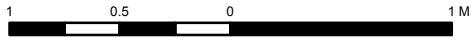


Access Sites Piscataquog River Map 1: Manchester/Goffstown

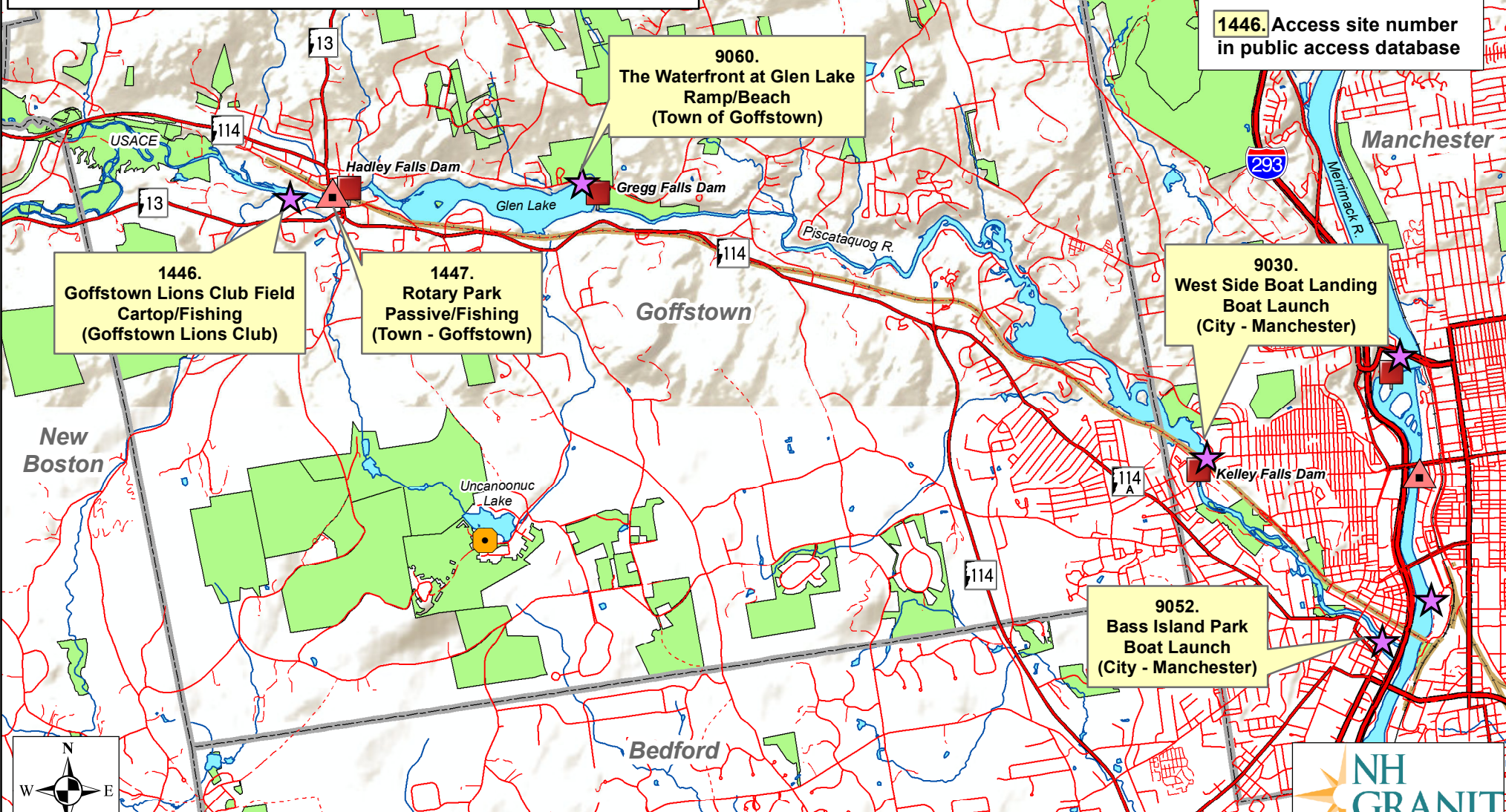
2015



Where an inactive rail line is adjacent to the river, informal access may exist, unless marked as private property.

- Boat Access
- Swim
- Other
- Dam
- Active Rail Line
- Inactive Rail Line

1446. Access site number in public access database



1446.
Goffstown Lions Club Field
Cartop/Fishing
(Goffstown Lions Club)

1447.
Rotary Park
Passive/Fishing
(Town - Goffstown)

9060.
The Waterfront at Glen Lake
Ramp/Beach
(Town of Goffstown)

9030.
West Side Boat Landing
Boat Launch
(City - Manchester)

9052.
Bass Island Park
Boat Launch
(City - Manchester)

