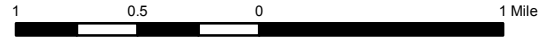


# Access Sites Connecticut River Map 15: Bath

2012



★ Boat Access

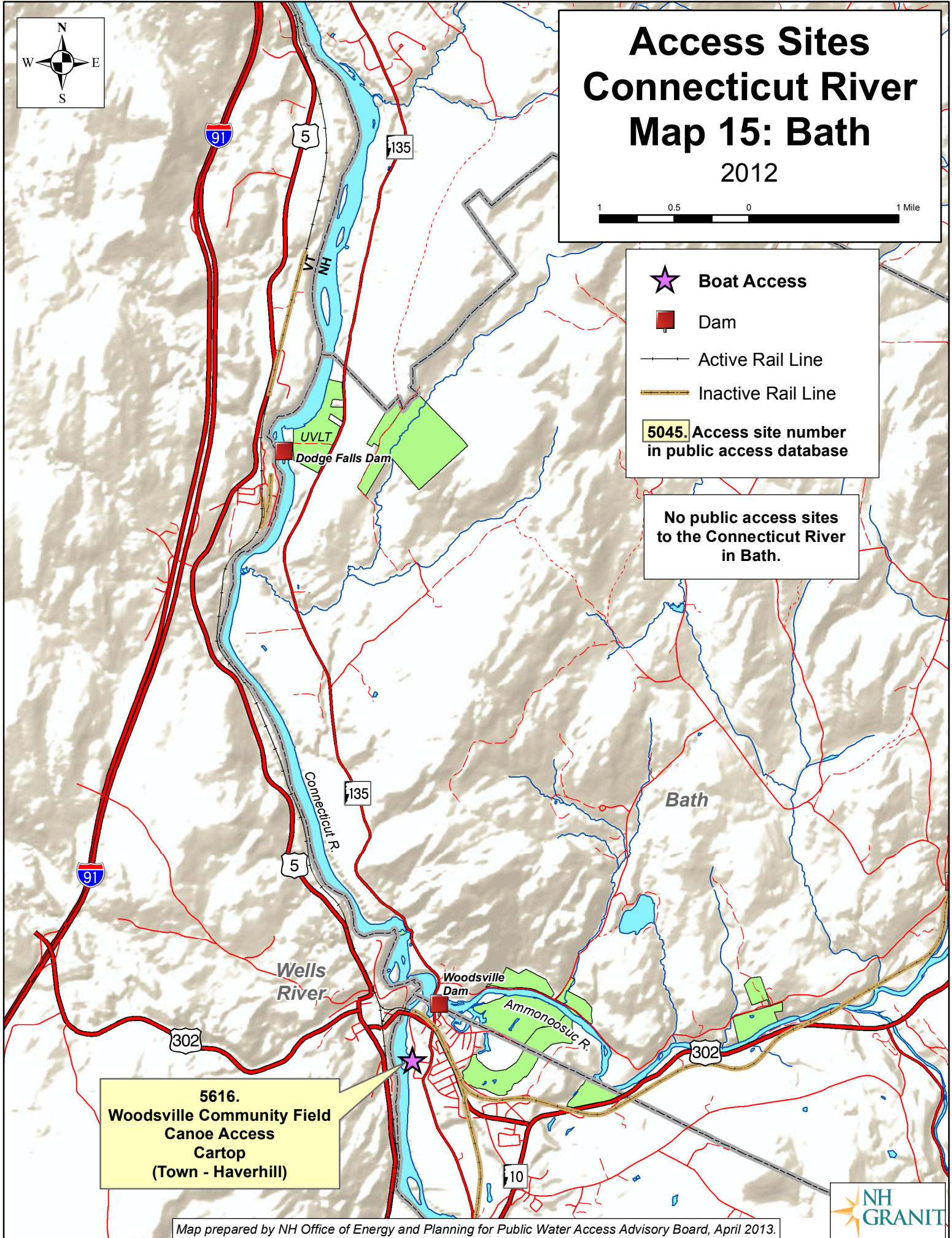
■ Dam

— Active Rail Line

— Inactive Rail Line

5045. Access site number  
in public access database

No public access sites  
to the Connecticut River  
in Bath.



5616.  
Woodsville Community Field  
Canoe Access  
Cartop  
(Town - Haverhill)

