

# New Hampshire Coastal Watersheds Freshwater Systems

**NH Coastal Watersheds**

- Conservation and Public Lands
- Municipal Boundaries
- State Boundaries
- Roads
  - Major highway (interstate / turnpike)
  - Minor highway (state / US)
  - Local Roads
  - Unimproved Roads (Class VI)
- Developed Land
- National Estuarine Research Reserve Boundary
- Surface Water
- Wetlands (NWI)
- Floodplain Forest Model
- SPARROW Catchments
- High Quality Stream Watersheds
  - Tier 1 - pop. dens. <20 people/sq. mi., developed <1%, agriculture <5%
  - Tier 2 - pop. dens. <36 people/sq. mi., developed <2%, agriculture <5%
  - Tier 3 - pop. dens. <64 people/sq. mi., developed <3%, agriculture <5%
  - Tier 4 - pop. dens. <90 people/sq. mi., developed <5%, agriculture <5%

**Streams**

- 1st/ 2nd Order
- 3rd
- 4th
- 5th
- 6th
- Special Significance Stream Reach

**Riparian Corridor- 500ft**

- (transparent)
- Federal Wild and Scenic River
- (Lamprey River)

**Dams**

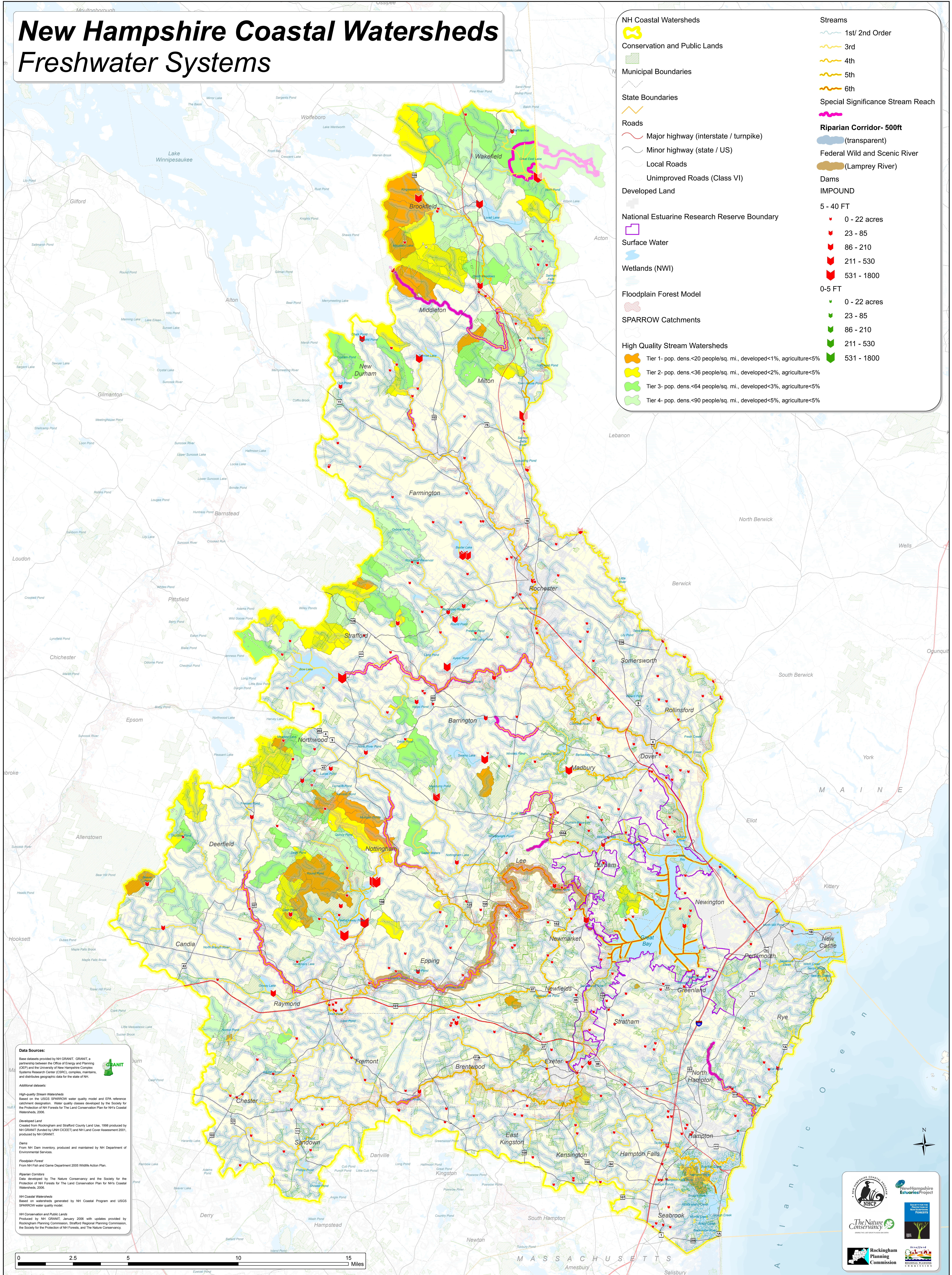
**IMPOUND**

**5 - 40 FT**

- 0 - 22 acres
- 23 - 85
- 86 - 210
- 211 - 530
- 531 - 1800

**0-5 FT**

- 0 - 22 acres
- 23 - 85
- 86 - 210
- 211 - 530
- 531 - 1800



**Data Sources:**

Base datasets provided by NH GRANIT, GRANIT, a partnership between the Office of Energy and Planning (OEP) and the University of New Hampshire Complex Systems Research Center (CSRC), compile, maintain, and distribute geographic data for the state of NH.

**Additional datasets:**

- High-quality Stream Watersheds**  
Based on the USGS SPARROW water quality model and EPA reference catchment designation. Water quality classes developed by the Society for the Protection of NH Forests for The Land Conservation Plan for NH's Coastal Watersheds, 2006.
- Developed Land**  
Created from Rockingham and Strafford County Land Use, 1998 produced by NH GRANIT (funded by UNH OCEET) and NH Land Cover Assessment 2001, produced by NH GRANIT.
- Dams**  
From NH Dam Inventory, produced and maintained by NH Department of Environmental Services.
- Floodplain Forest**  
From NH Fish and Game Department 2005 Wildlife Action Plan.
- Riparian Corridors**  
Data developed by The Nature Conservancy and the Society for the Protection of NH Forests for The Land Conservation Plan for NH's Coastal Watersheds, 2006.
- NH Coastal Watersheds**  
Based on watersheds generated by NH Coastal Program and USGS SPARROW water quality model.
- NH Conservation and Public Lands**  
Produced by NH GRANIT, January 2006 with updates provided by Rockingham Planning Commission, Strafford Regional Planning Commission, the Society for the Protection of NH Forests, and The Nature Conservancy.

