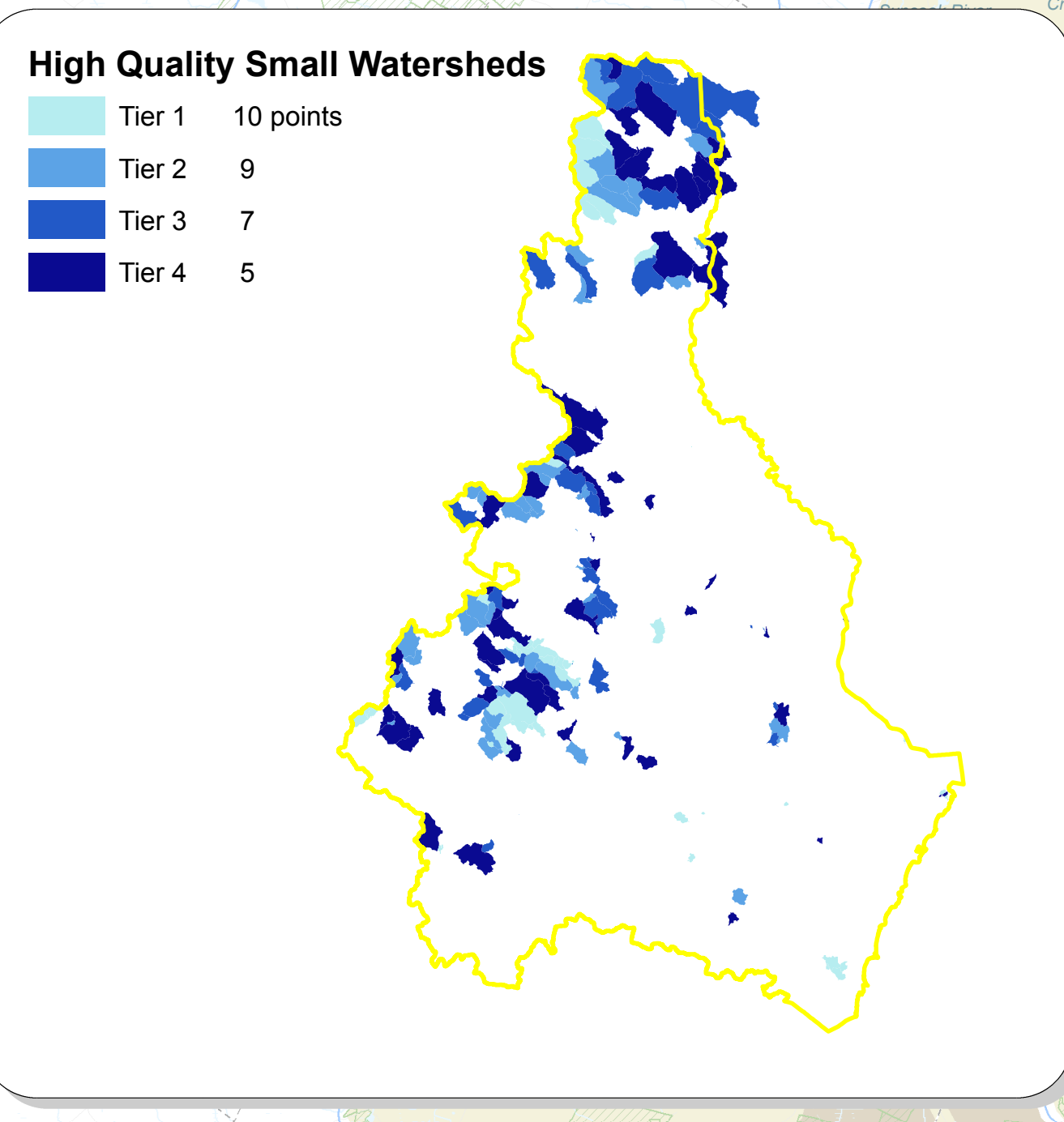
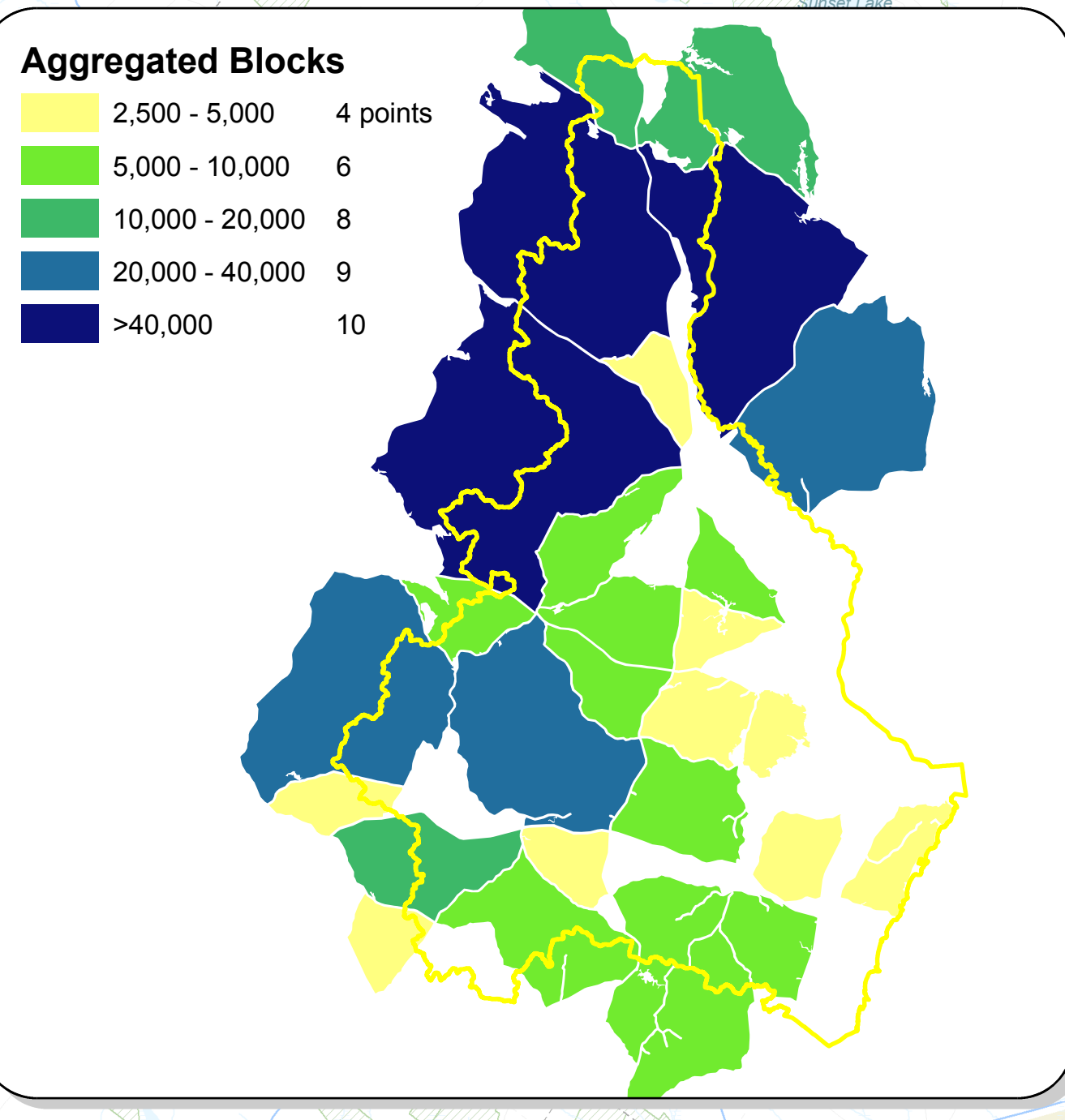
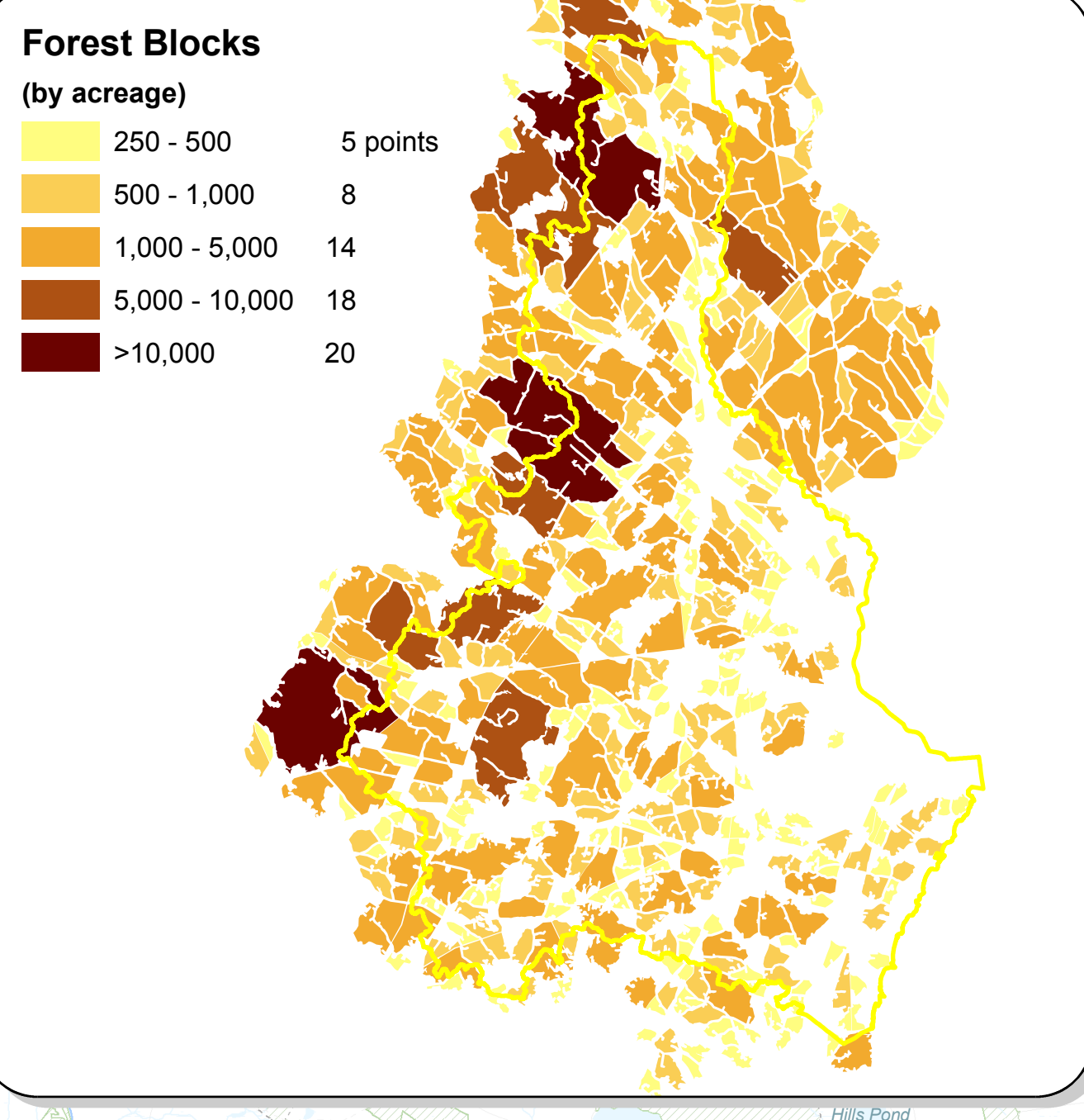


New Hampshire Coastal Watersheds Forest Ecosystems



NH Coastal Watersheds

- Conservation and Public Lands
- Municipal Boundaries
- State Boundaries
- Roads
 - Major (interstate / turnpike)
 - Minor (state / US)
 - Local Roads
 - Unimproved (Class VI)

Surface Water

- Wetlands (NWI)
- Streams

High Value Forest Ecosystem Zones

Forest Ecosystems

Co-occurrence Model

0
1 - 4
5 - 9
10 - 14
15 - 21
22 - 31

High Value Forest Ecosystem Zones

The forest ecosystems co-occurrence model shown here was generated from three relevant datasets: High quality stream watersheds adapted from the USGS SPARROW model, and two datasets from the NH Forest Block Model: forest blocks (unfragmented by any roads) and aggregated blocks (landscape level blocks fragmented only by major roads). These three datasets are displayed on the inset maps (left) along with the value assigned to each class.

High value areas in the co-occurrence model are emphasized in brown and delineated by "High Value Forest Ecosystem Zones". These zones were created by averaging model values over a 1000 acre area (approximately 3700 foot radius) and calculating the top 20% (by area) of each half of the watershed (a dividing line can be seen along routes 125 and 101).

Data Sources:

These datasets provided by NH GRANIT, GRANIT, a partnership between the Office of Energy and Planning (OEP) and the University of New Hampshire's Center for Systems Research (CSR), compile, maintain, and distribute geographic data for the state of NH.

Additional datasets:

Forest Blocks, Aggregated Blocks, and High Value Forest Ecosystems developed by The Nature Conservancy for The Land Conservation Plan for NH's Coastal Watersheds, 2006.

NH Coastal Watersheds based on watersheds generated by NH Coastal Program and USGS SPARROW water quality model.

NH Conservation and Public Lands provided by NH GRANIT, January 2006 with updates provided by Rockingham Planning Commission, Strafford Regional Planning Commission, the Society for the Protection of NH Forests, and The Nature Conservancy.

