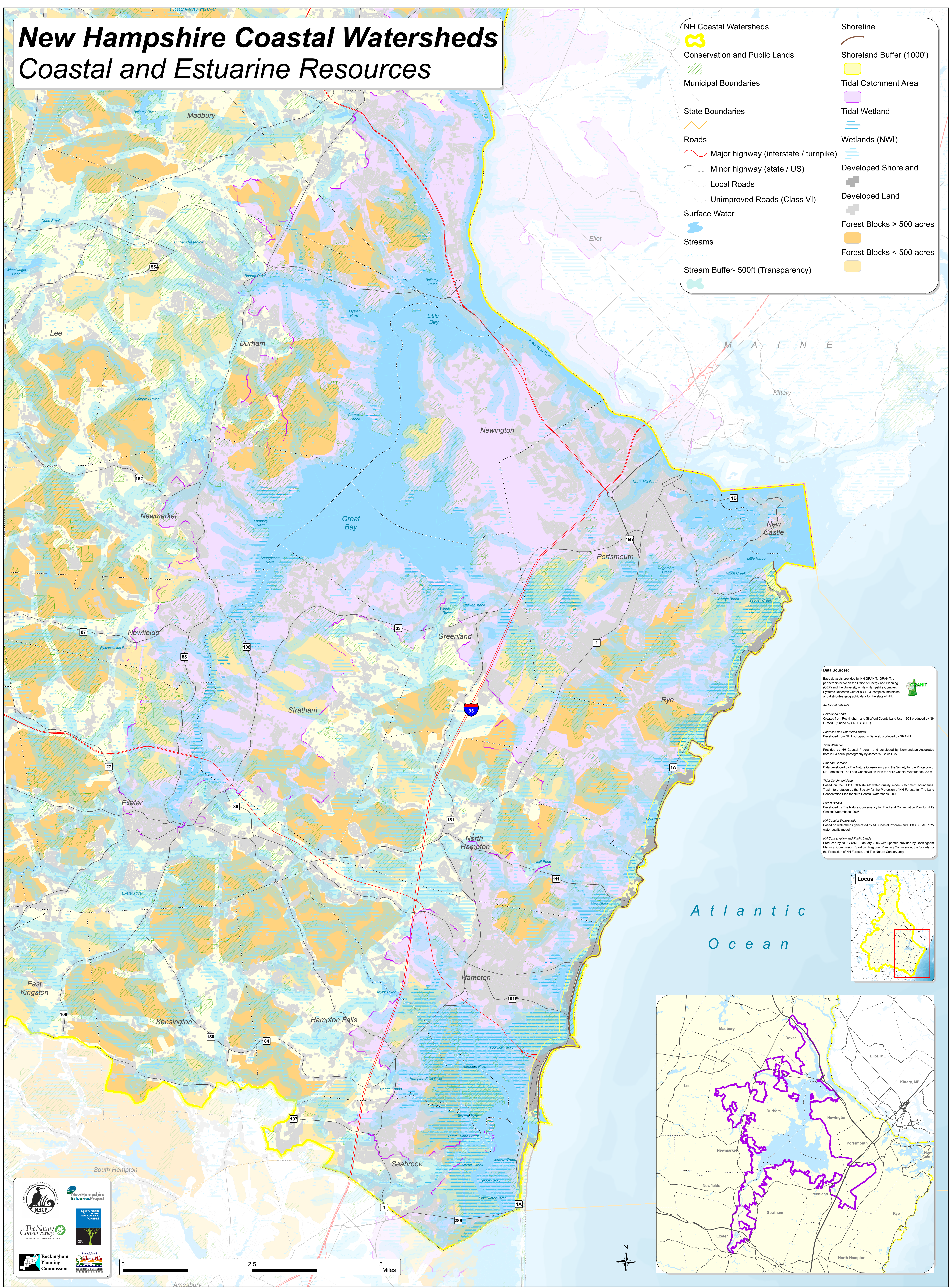


New Hampshire Coastal Watersheds

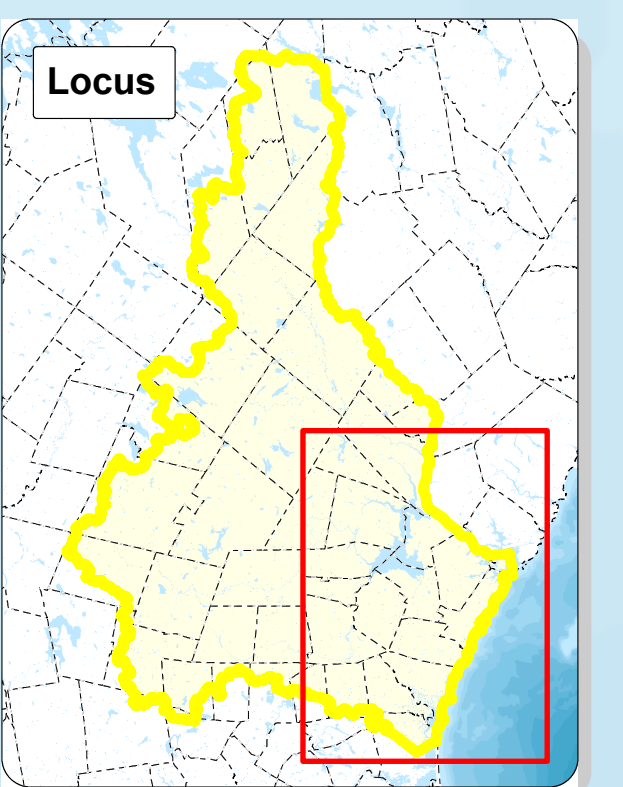
Coastal and Estuarine Resources



NH Coastal Watersheds	Shoreline
Conservation and Public Lands	Shoreland Buffer (1000')
Municipal Boundaries	Tidal Catchment Area
State Boundaries	Tidal Wetland
Roads	Wetlands (NWI)
Major highway (interstate / turnpike)	Developed Shoreland
Minor highway (state / US)	Developed Land
Local Roads	Forest Blocks > 500 acres
Unimproved Roads (Class VI)	Forest Blocks < 500 acres
Surface Water	Stream Buffer- 500ft (Transparency)
Streams	

Data Sources:
 Base datasets provided by NH GRANIT, GRANIT, a partnership between the Office of Energy and Planning (OEP) and the University of New Hampshire Complex Systems Research Center (CSRC), compile, maintain, and distribute geographic data for the state of NH.

Additional datasets:
 Developed Land: Created from Rockingham and Strafford County Land Use, 1998 produced by NH GRANIT (funded by UNH CICEET).
 Shoreline and Shoreland Buffer: Developed from NH Hydrography Dataset, produced by GRANIT.
 Tidal Wetlands: Provided by NH Coastal Program and developed by Normandeau Associates from 2004 aerial photography by James W. Sewall Co.
 Riparian Corridor: Data developed by The Nature Conservancy and the Society for the Protection of NH Forests for the Land Conservation Plan for NH Coastal Watersheds, 2006.
 Tidal Catchment Areas: Based on the USGS SPARROW water quality model catchment boundaries. Tidal interpretation by the Society for the Protection of NH Forests for the Land Conservation Plan for NH Coastal Watersheds, 2006.
 Forest Blocks: Developed by The Nature Conservancy for the Land Conservation Plan for NH Coastal Watersheds, 2006.
 NH Coastal Watersheds: Based on watersheds generated by NH Coastal Program and USGS SPARROW water quality model.
 NH Conservation and Public Lands: Produced by NH GRANIT, January 2006 with updates provided by Rockingham Planning Commission, Strafford Regional Planning Commission, the Society for the Protection of NH Forests, and The Nature Conservancy.



Atlantic
Ocean

